

X-Stream

X-Stream is the exclusive toner for the Eve hydra-dermabrasion function. This toner, which is suitable for all skin types, thoroughly cleans, gently exfoliates, and effectively hydrates and rejuvenates the skin surface.

The main active ingredients of X-Stream are:

PHA (Poly Hydroxy Acid)

Lactobionic Acid

PHA is a very effective moisturizer and mild exfoliator, enabling delicate peeling even for sensitive skin.

PHA is proven to improve skin complexion, correct sun damage, and protect the skin from environmental hazards.

Unique Benefits

- ✓ Effective hydration of the stratum corneum
- ✓ Gentle skin exfoliation
- ✓ Improves skin texture and tone

LHA (Lipo Hydroxy Acid)

Capryloyl Salicylic Acid

LHA enables cell-by-cell exfoliation, which is tolerable even by very sensitive skin. It also helps in reducing skin redness and in rejuvenating the skin surface.

LHA is especially effective in acne treatment - It is proven to decrease population of P. acne bacteria in the sebaceous glands.

Unique Benefits

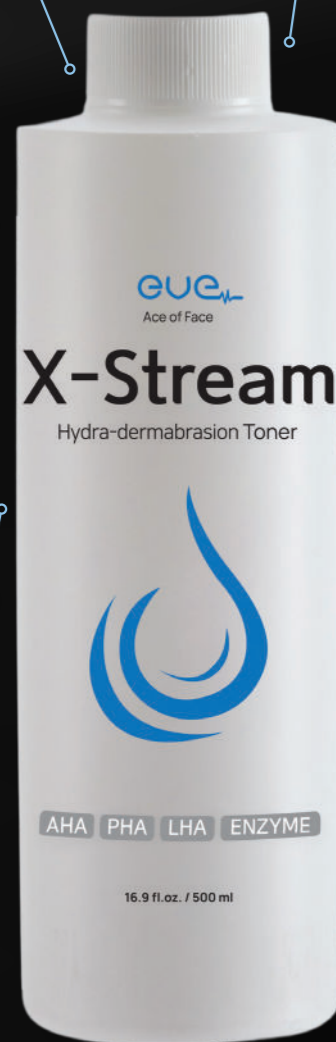
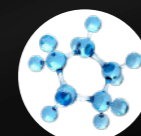
- ✓ Gentle, non-irritating skin exfoliation
- ✓ Reduces acne
- ✓ Reduces skin redness

Other Active Ingredients

Hyaluronic Acid, Niacinamide

The positive impact of these ingredients on the skin includes:

- ✓ Anti-oxidant effect
- ✓ Improvement of skin texture
- ✓ Revitalizing dull complexion
- ✓ Lightening pigmentation
- ✓ Restoring the skin's natural water / oil balance
- ✓ Soothing skin irritation



Proteolytic Enzymes

Bromelain

Bromelain enables proper desquamation and cell turnover in the epidermis, by helping the stratum corneum's own proteolytic enzymes (Proteases) to break down protein (Corneodesmosomes).

Unique Benefits

- ✓ Gentle exfoliation of the stratum corneum
- ✓ Reduces superficial wrinkles and fine line

AHA (Alpha Hydroxy Acid)

Citric Acid

Citric Acid balances the skin Ph level, thus enables the cleansing effect of the toner.



WEERO

weero@weeroweero.com | www.weeroweero.com | +82 31 5182 8588
A605 VentureValley II, 142-10, Saneop-ro 156beon-gil, Gwonseon-gu, Suwon-si, Gyeonggi-do, R.O.Korea (16648)

D.B SkinTech Innovation

info@dbsti.com | www.dbsti.co.il | +972 4 677 2080
Haoman 12 (Miryam house), Hadera 3850172, Israel

eve

Ace of Face

Technical Specifications

Dimensions (Net)	Device - 20 x 40 x 30 cm Cart - 36 x 40 x 105 cm
Dimensions (Packaging)	Device - 35 x 55 x 50 cm Cart - 48 x 18 x 76 cm
Weight (Packaging)	Device - 13 Kg Cart - 8.5 Kg
Device Power Consumption	100-240V, 50 / 60 Hz, Max 100VA (24V / 5A)
Microcurrent Programs	Electric Current - 10-1000 μ A Frequency - 6-500 Hz Pulse Amplitude - Max 1000 μ A
EMS Programs	Electric Current: 1-3 mA Frequency - 2-2000 Hz Pulse Amplitude - Max 3 mA

eve

Ace of Face

Hydra-Dermabrasion, Diamond Peeling,
Microcurrent & EMS



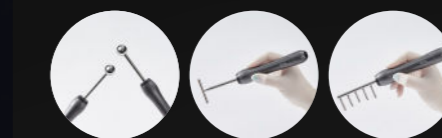
SkinTech innovator - Ace of Face

Eve is a professional aesthetic device, combining several highly-effective skincare technologies:

- ✓ Advanced, multi-tip **hydra-dermabrasion**, using an exclusive toner - **X-Stream**.
- ✓ **Diamond peeling** (aka micro-dermabrasion).
- ✓ Multiple **Microcurrent** functions, each intended to regulate/ re-activate specific bio-electric activity in the skin, and hence to achieve different aesthetic results.
- ✓ Four different **Electro Muscle Stimulation (EMS)** programs.

Smart & Effective Multi-Functional Device

Variety of Microcurrent Applicators



Ball-shape, T-shape, and comb-shape microcurrent metal tips, for convenience in various treatment areas.

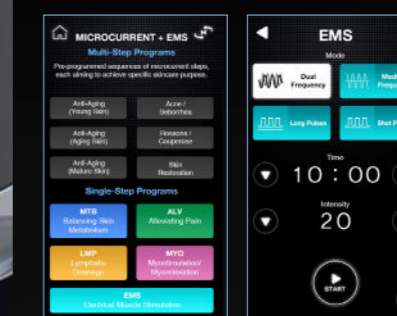


Conductive micro-gloves, for a more pleasant and attentive microcurrent treatment.

Hydra Control Dials

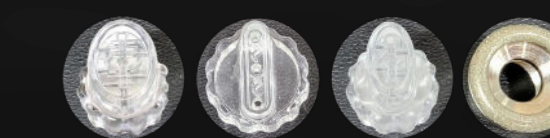
Adjust the hydra-dermabrasion jet of X-Stream toner and the vacuum suction, per patients' skin type, skin condition, and individual preferences.

Structured, yet Adjustable, Treatment Programs



Offering selection of **pre-set, automated programs**, while allowing **adjustment of programs' duration and parameters** to the treatment indications, skin condition, and patient's preferences.

Multiple Hydra/ Diamond Tips



- ✓ Selection of hydra-dermabrasion tips, for different facial areas and for the scalp.
- ✓ 3 different diamond tips, in different densities and sizes, for peeling of different skin types and facial areas.

Exclusive Hydra-dermabrasion Toner

The exclusive formula of **X-Stream** - The Eve hydra-dermabrasion toner - is highly effective in **gently exfoliating and effectively hydrating** the skin.



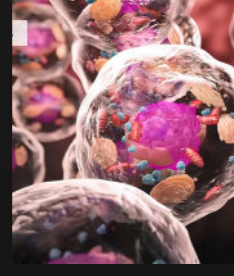
Smart Toner / Sediment Mechanisms



- ✓ Smart mechanism enables **easy plugging/ un-plugging** the bottle of X-Stream toner.
- ✓ Smart sensor presents on-screen warning, to **prevent overflow** of the sediment bottle.

Microcurrent Electrotherapy

The Eve microcurrent function delivers low intensity and low frequency electric impulses into the skin. Though hardly perceptible, **these microcurrents mimic the body's own bioelectric currents**, and hence regulate/ re-ignite electro-dependent intracellular processes.



Eve offers **4 microcurrent functions**, differing from each other in the intensity and frequency of their electric currents. **Each microcurrent function regulates the bioelectric activity of different target cells, and therefore has a different physiological impact on the skin:**

MTB - Re-activating Skin Cell Metabolism

The MTB microcurrent function targets the skin structural cells - keratinocytes and fibroblasts.

This function repairs the bioelectric potential of the cell membrane and stimulates production of ATP, thus restores metabolic activity of the skin cells and skin regeneration processes.

MTB microcurrent therapy **helps recover dull, lifeless and damaged skin** (e.g., as a result of aging, sunburn, or inflammation). It **restores both healthy function of the skin, and its young, lively appearance.**

LMP - Stimulating Blood Circulation & Lymphatic Drainage

The LMP microcurrent function regulates the bio-electric activity of the smooth muscle cells in the blood and lymph capillaries. It restores micro-circulation in these capillaries, and as a result:

- ✓ **Stimulates lymphatic drainage** - helps remove toxins from the skin, and **reduces edema and swelling** in areas of water retention.
- ✓ Improves skin condition in cases of **rosacea, couperose, and other facial vascular disorders.**
- ✓ **Restores skin metabolism and tissue regeneration.**

ALV - Alleviating Skin Pain & Discomfort

The ALV microcurrent function targets the neuronal cells in the skin.

ALV microcurrent therapy raises the excitability threshold of the nerve endings in the skin, which reduces pain and other skin discomfort, in cases of hyper-sensitivity, acne, inflammation, and the like.

MYO - Muscle Stimulation & Relaxation

The MYO microcurrent function targets the thin fibers of the face and neck muscles. By fibrillating these fibers, this function regulates muscle tonus:

- ✓ **Stimulates muscles in hypo-tonus**, thus **lifts sagging skin.**
- ✓ **Relaxes muscles in hyper-tonus**, thus **smooths of expressive wrinkles.**

Structured Microcurrent programs

Multi-Step Microcurrent Programs

Structured, multi-step microcurrent programs, each designed to achieve a different set of clinical indications:

- Anti-Aging for different age groups
- Treatment of facial acne or Seborrhea
- Treatment of Rosacea or Couperose
- Restoration of dull, aging, or damaged skin

Each program is an automatic sequence of several different microcurrent functions, arranged and timed per the specific indications of that program.

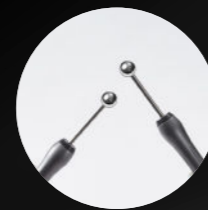
Single-Step Microcurrent Programs

The single-step programs allow users to operate each of the Eve microcurrent functions on its own, for treatments focusing on achieving any of these aesthetic results:

- **MTB** - Recovering dull, lifeless and damaged skin (e.g., following destruction treatment).
- **LMP** - Stimulating micro-circulation in the skin, to reduce edema and swelling, and to improve skin condition in cases of rosacea, couperose, and the like.
- **MYO** - Stimulating face and neck muscles in hypo-tonus, for a lifting effect, and relaxing facial muscles in hyper-tonus, to smooth expressive wrinkles.
- **ALV** - Alleviating skin pain and discomfort



Variety of Microcurrent Applicators



Ball-shape Metal Tips -

Suitable for any microcurrent function and for all treatment areas.



Comb-shape Metal Tip -

Intended for the scalp, to stimulate micro-circulation, thus strengthen the hair roots and reduce seborrhea and dandruff.



T-shape Metal Tip -

Useful for covering broader skin areas (e.g. the cheeks or the neck) conveniently and more efficiently.



Conductive Gloves -

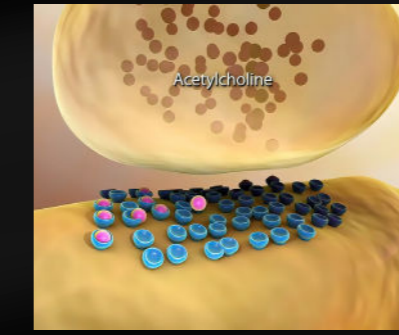
For a pleasant, attentive and highly-effective microcurrent treatment.

Electrical Muscle Stimulation (EMS)

The Eve Electrical Muscle Stimulation (EMS) function offers a **'training session' for the facial muscles in the lower half of the face**, which are in hypo tonus, in need of stimulation.

By delivering low voltage electric pulses to the motor points of these muscles, EMS sessions by Eve stimulate the release of the neurotransmitter Acetylcholine (ACh) from the nerve endings. ACh then binds to receptors on the muscles' membrane and triggers muscle contraction.

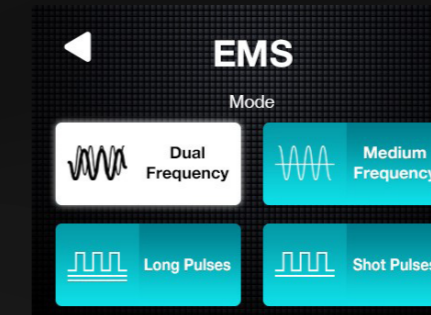
The repeated muscle contraction and relaxation over the treatment duration reactivate the muscle function, and consequently restore muscle tonus, resulting in a **lifting and tightening effect.**



4 Different EMS Programs

Eve offers 4 EMS programs, differing from each other in the frequency and pattern of their electric pulses.

- ✓ The flexible selection of EMS program and current intensity allow users to tailor an EMS session to the individual sensitivity of each patient, such that:
- ✓ EMS by Eve effectively contracts the patient's facial muscles.
- ✓ The sensation of muscle contraction is comfortable for the patient for a duration of 5-10 minutes, as required for an impactful EMS session.



Hands-Free EMS Sessions

Eve offers **hands-free EMS therapy**, by connecting its electrodes to fixed electrode pads at strategic muscle points on the face.

This **relaxed experience** for the patient, and **effortless treatment** for the aesthetician, results in an **effective muscle practice**, with apparent skin lifting results.



Microcurrent & EMS Electrotherapy

- ✓ Painless, Comfortable Treatment
- ✓ Impressive Results
- ✓ No Downtime
- ✓ Long-term, Cumulative Impact

Hydra-Dermabrasion

Hydra-dermabrasion by Eve is very effective in **thoroughly cleansing, gently exfoliating, and well hydrating the skin surface.** It is the ideal first step in every aesthetic treatment.

The Eve hydra-dermabrasion applicator sprays rotating, radial jets of **X-Stream -the Eve exclusive toner-** on the skin. The X-Stream toner dissolves dirt and gently exfoliates the skin surface. The toner also effectively hydrates the stratum corneum.

A vacuum suction then removes the peeled debris, together with excess sebum and Demodex Folliculorum from the skin, while also extracting impurities from inside the pores.

The result of the Eve hydra-dermabrasion treatment is a **healthier, well-hydrated, fresh-looking and glowing skin, with a much smoother texture.** You will also notice significant reduction of blackheads and large pores.

4 Aesthetic Advantages



Cleansing

The X-Stream jet removes dirt, excess sebum and Demodex Folliculorum from the skin surface.



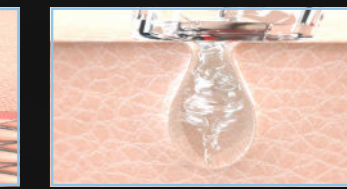
Exfoliation

PHA, LHA, and proteolytic enzymes enable very gentle exfoliation of dead skin cells and waste.



Extraction

Adjustable vacuum suction painlessly extracts impurities from inside the pores.



Hydration

The ingredients of the X-Stream toner effectively hydrate the stratum corneum.

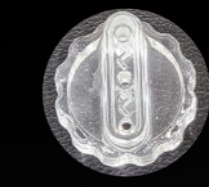
Interchangeable Hydra Tips



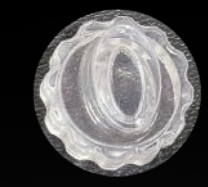
Large



Small



Scalp



Cleaning

Blue/ White LED Light



Destroys P. acne bacteria in the hair follicles and skin pores



Extra light, for better visibility

Diamond Peeling

The Eve Diamond Peeling function **removes layer-by-layer of dead skin cells - together with dirt and excess sebum - from the skin surface**, to reveal younger skin underneath.

The peeled debris is removed from the skin by an adjustable vacuum suction.

Diamond peeling improves the general appearance of the skin:

- ✓ Brightens and evens the skin complexion.
- ✓ Smooths areas of keratosis or shallow acne marks.
- ✓ Reduces fine lines.

